



Report Back Presentation

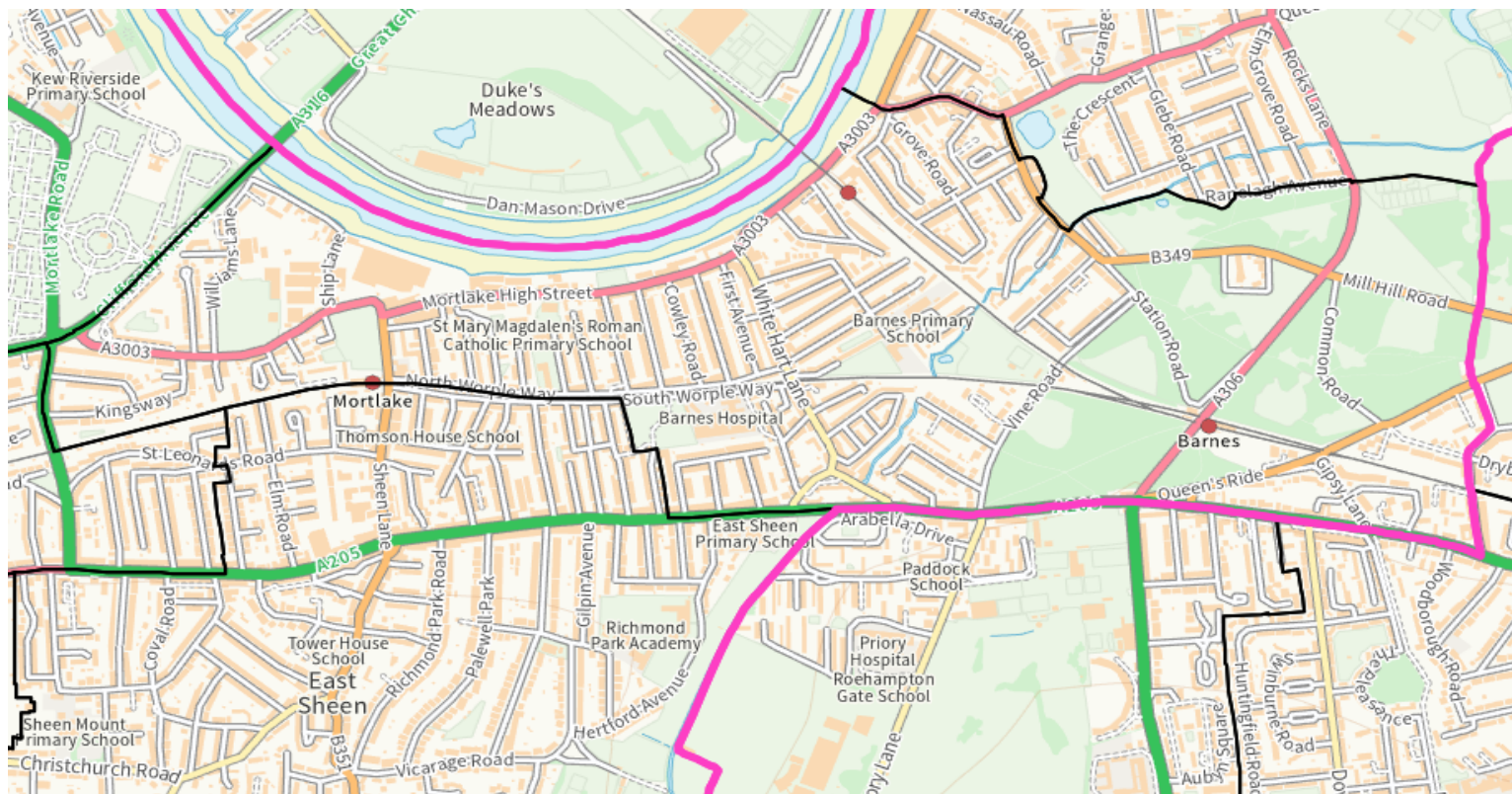
5 July 2025





Mash Up Publicity ..

Social media, school newsletters, banners and leaflets across the area ...



“Look to the future...”



Mash Up 15 March

“There’s a role for much more community involvement”

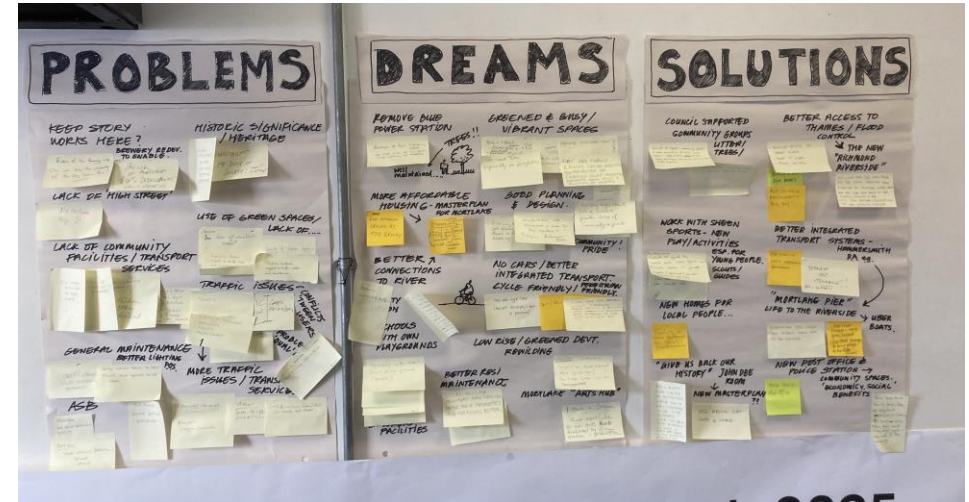
Brainstorming – Problems, Dreams, Solutions Hands On Planning sessions - by theme

Asking Questions like:

- How can we make Mortlake a more attractive place to live?
- What can be done to improve shops and services locally?
- How can we make Mortlake greener and more sustainable?
- How can we create a heart for our community?

Over 250 residents took part in the day
Local councillors and the MP attended
Representation from local charities and businesses

“There are loads of initiatives we didn’t know anything about.”





Business Brainstorming – Problems, Dreams, Solutions for local businesses and charities

Asking Questions like:

- What attracted you to the area
- How can we help promote your business
- How we can help your business grow

Over 30 local businesses took part
Local councillors and the cabinet member for
business and growth attended





Young Person's survey distributed to schools, scouts, youth clubs

Questions included:

- What do you like to do outside of school and where do you do it?
- What else would you like to do locally?
- What stops you from taking part in activities?
- What makes you feel part of your community?

Over 150 surveys returned from schools, scouts, youth clubs

A **further consultation** is planned for young people in the Autumn, run by the PowerStation Youth club with local schools



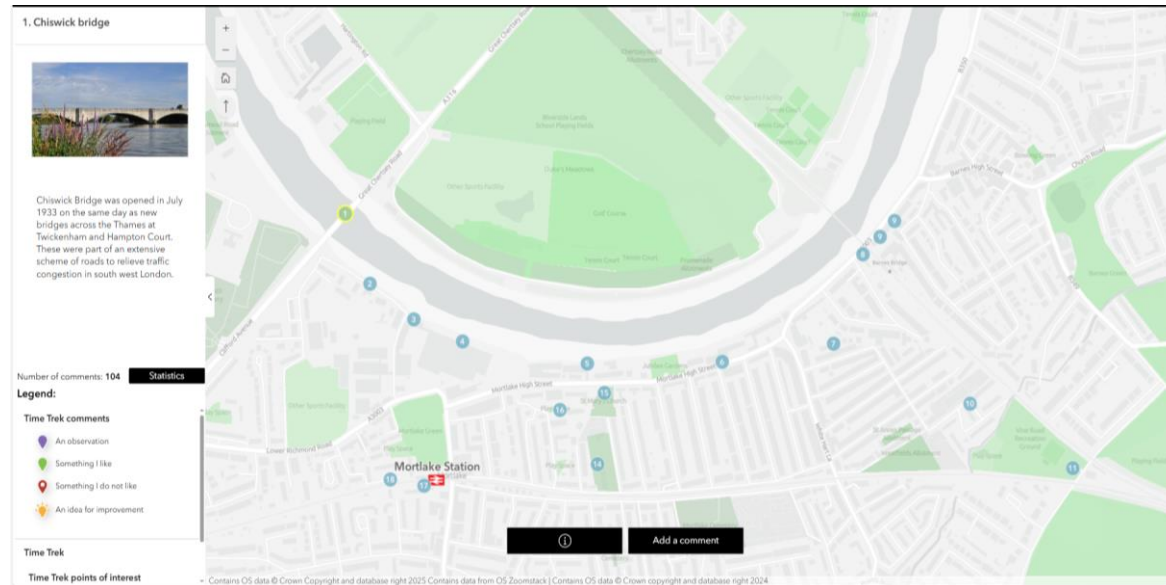


History Walk 14 March

“More people need to appreciate the area”

Promote Mortlake’s Heritage – showcase unique identity and rich history

Guided walk by the Deatons, two local historians – sites and descriptions available online

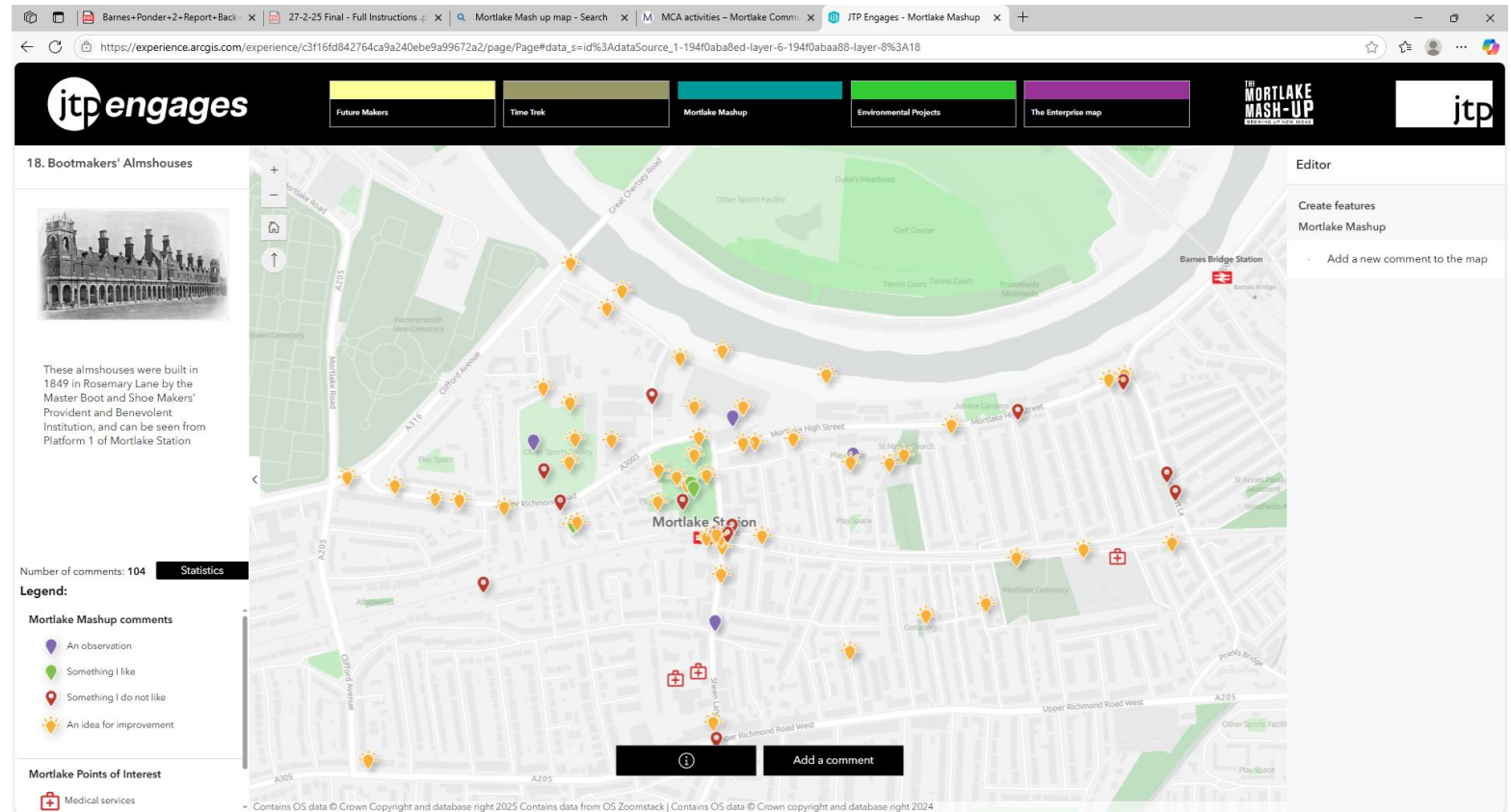


Over 80 residents attended Including local school children

Interactive Map



An **interactive map** allowed virtual participation in the Mash Up activities





Mortlake Context

Since the Mortlake Mash up:

- The STAG brewery residential development has been approved
- The DFE has still not confirmed whether they will fund the STAG secondary school
- Barnes Hospital site development has started, a special needs school and hospital providing outpatient adult mental health services are expected to open in September 2027. The residential development site is expected to start demolition in August.
- The Community Fund for the East of the Borough currently has £413,000 available for projects. This will increase over the next few years as the large developments, like STAG progress. There is also dedicated S106 funds for some community projects.





Mash Up Ideas

We have collated **resident priorities** under **7 theme headings**:

- Community
- Safety
- Environment
- Connectivity
- Infrastructure
- Young People
- Enterprise

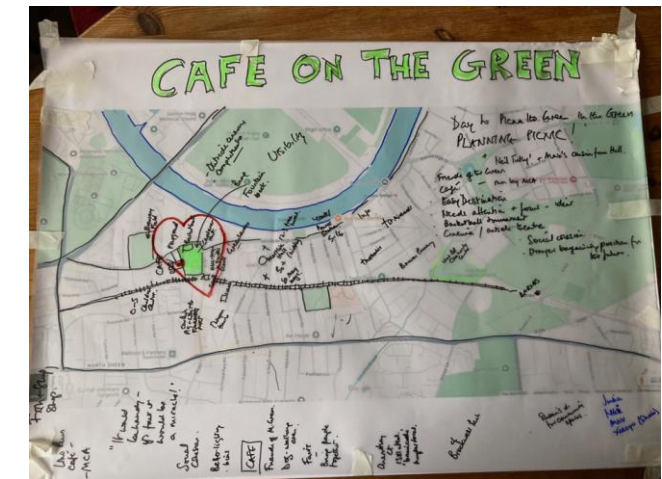
Created an **outline action plan** based on the **ideas** for each theme



Community vision - *creating a caring, inclusive community*



- Transform Mortlake Hall into an intergenerational community centre, advice/information hub, with increased visibility and signage, seek funding for a part-time development worker to support the community projects
- Open toilets and an affordable 'Café on the Green' to create a symbolic community hub on the Mortlake side of the station (e.g. coffee/ice-cream van with seating on NE side of playground)
- Promote Mortlake's rich historical heritage and unique identity, improve signage/plagues, establish a 'Mortlake History Centre' in the best available location
- Celebrate local stories through public art, events, and cultural installations (e.g. decorate bridges with murals, host annual fairs)
- Provide free inclusive sports, music and play spaces for all ages. Host weekly 'River Run' in Mortlake
- Connect local schools, churches, sports centres, and community groups to optimise shared use of community space.
- Improve community cohesion – launch local, volunteering inter-generational database for community activities like litter-picks, community growing and connect local groups e.g. artists and help them display art, recruit members, etc
- Identify safe, welcoming places with friendly people for young people in schools, youth centres and activity hubs, use peer mentors to encourage participation



Have we missed anything?



Community – Action Plan

Theme	Action Item	Resident Partners	Notes/Resources
Placemaking	Promote local history in community spaces, via habitats and heritage, visit Richmond, walks etc.	Council + Historians	Include station signage, murals, John Dee Room, Time Trek walks online etc
Placemaking	Open Café on the Green, could be placed inside the playground area	Council + local Traders + Charities	The Café should be inclusive
Placemaking	Enhance community centre - advice/information hub at Mortlake Hall, improve visibility and signage, seek funding for a development worker to help achieve Mash Up outcomes		
Community	Launch local volunteering and intergenerational database – litter picks etc. , promote local groups e.g. artists	Community Coordinators + scouts	Involve schools, sports, youth centres, scouts, MCA, MESS and other local charities
Community	Free/affordable, sports, music, play spaces		
Community	Access to free, inclusive sports and activity space, enhance existing areas e.g. play area behind John Dee flats	Council + Youth Groups	PowerStation Youth centre, school sites, play areas, STAG Brewery field
Enterprise	Hold regular community events: farmer's markets, fairs		
Young People	Consider young people's needs when planning community activities/spaces	Council + Youth centre + Schools	



“Big up the community centre.”

“A cafe would be handy - in fact it would be a miracle!”



Safety vision - *create a safe environment for everyone*

- Improve lighting and CCTV in public areas (e.g., The Green, Ship Lane, Thames path, narrow alleys, housing estates), shopping areas – to support winter and night-time economy and routes to youth venues
- Address antisocial (drug) behaviour hotspots e.g. bridges, housing estates, cemeteries, narrow alleys, stations.
- Improve visibility of the Police Safer Neighbourhood Team and increase local engagement e.g. MCA community hub, regular street briefings and coffee sessions.
- Open a police station in the new STAG development or nearby
- Create safe spaces for young and vulnerable groups, e.g. women.
- Focus resources on preventing retail theft and ASB.
- Offer canoeing and river safety lessons
- Develop dog-free play areas and disability-friendly quiet spaces



Have we missed anything?



Safety – Action Plan



Theme	Action Item	Resident Partners	Notes/Resources
Safety	Improve lighting and CCTV in key public spaces	Council + Police	Include The Green, Ship Lane, Thames Path, narrow alleys, housing estates
Safety	Address antisocial (drug) behaviour hotspots	Council + Police + SNB + RHP + NHS	
Safety	Increase community engagement with SNT	Police	
Safety	Create safe spaces for young and vulnerable groups, e.g. women	Council + Police + community hub	Include The Green, Ship Lane, Thames Path, narrow alleys, housing estates
Enterprise	Focus on prevention of retail theft and ASB	Police + Traders	
Young People	Offer river safety lessons	Council	
Young People	Dog-free and disability friendly play spaces	Council	

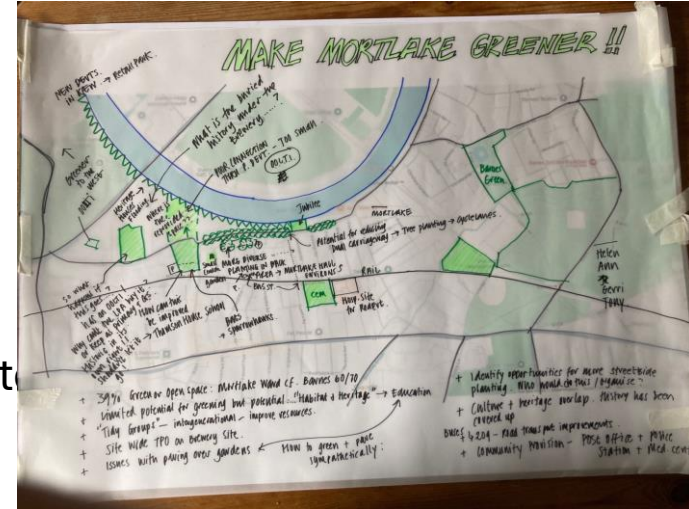


“We need much better lighting – it’s very poor across the Green and down to the Ship...I won’t go that way – it feels unsafe.”



Environment vision – *protect, enhance and rejuvenate our area*

- Promote 'Friends of Mortlake Green' – to enhance, rewild and make better use of Mortlake Green, provide accessible public toilets nearby, remove unsightly structures (e.g., blue power box).
- Enhance Jubilee Gardens, make it more dog and children/teen friendly
- Make more use of river – provide rowing, paddle boarding, canoeing – by the SHIP?
- Improve greening along footpaths, pavements, roads and introduce parklets where possible (e.g., Mortlake High Street, South Worple Way/Ave, Church Path (adjacent to footbridge and St Mary Magdalen school fence), White Hart Lane, Langdon Place, historic walls).
- Support Community Bluescapes flood project along Mortlake High Street, Mortlake Hall and RHP estates (e.g. enhance RHP playground on Vineyard path for all ages)
- Improve street maintenance, including litter collection and weed clearing, provide additional bins and re-site recycling bins where they encourage fly tipping.
- Enhance the Tow path so that it is more flood resilient and accessible
- Fence off hazardous areas in green spaces and increase tree planting.
- Install community growing raised beds and hopscotch/patterned pavements
- Raise awareness of environmental care in clubs and schools.





Environment – Action Plan

Theme	Action Item	Resident Partners	Notes/Resources
Environment	Organise – Friends of Mortlake Green, Rewild Mortlake Green + resist 5m wide concrete pathway,	Parks Dept, Habitats & Heritage + Community Groups + planning + traders	Rewild Mortlake Green, improve Mortlake High Street, South Worple Way, Church Path, Historic walls, White Hart Lane, Langdon Place and other key sites
Environment	Support Bluescapes project along Mortlake High Street & Mortlake Hall	Barnes Common + Council + RHP	
Environment	Enhance Tow Path and river	PLA + Council	
Environment/ Young people	Enhance jubilee gardens, vine road recreation area, green infrastructure (hanging baskets, planters, parklets).	Council	
Young People	Fence off hazardous areas	Council	
Young People	Install hopscotch patterns etc in green spaces	Council	
Young People	Increase environmental education	Schools + Clubs + council	

THE MORTLAKE MASH-UP
BREWING UP NEW IDEAS



“Plant along the pavements”

“Mortlake has relatively little green space – 39% of the whole borough; Sheen and Barnes have 60-70%. It’s very constricted here.”



Connectivity vision – *make it easier for everyone to move around*

- Improve signage to heritage sites, walks, community facilities and services
- Enhance Mortlake Station – accessible toilets on the Mortlake side, lifts, crossing, safety, visibility, signage, electric bike parking – separate from push bike parking
- Utilise the river better, develop a Mortlake Wharf or pier and/or pedestrian bridge from STAG to Chiswick (Duke's Meadow)
- Reduce traffic congestion with improved flow and rail crossing efficiency.
- Improve pedestrian safety and continuous cycling infrastructure, particularly along the busiest roads – LRR, Mortlake High Street, the Terrace.
- Reopen Hammersmith Bridge to buses, emergency vehicles and cycles.
- Expand public transport (rail, bus) services, particularly North to South – not easily get to the recycling centre in Kew or the cemetery
- Review parking for local businesses (employees, business vans, delivery trucks and customers)
- Expand protected cycling paths and safe walking zones for young people



Have we missed anything?



Connectivity – Action Plan

Theme	Action Item	Partners	Notes/Resources
Connectivity	Improve signage, to historical sites, walks, services (children’s centre, youth club and Mortlake Hall community centre)	Council	
Connectivity	and improve cycling/pedestrian routes	TfL + Council + SW Rail	Coordinate with Hammersmith Bridge plans
Rail	Enhance Mortlake Station, lifts, crossing - Shorten level crossing barrier times, safety, visibility, signage	Council + SW Rail + Groups	Long terms funding for major works, plus more short term wins
Buses	Enhance bus/train frequencies and North/South routes and explore river pier	TfL + River Services (PLA)	Connect to Uber Boat; improve 33 bus and rail service
Enterprise	Review parking for local businesses	Council + Traders	
Young People	Expand safe cycling paths and walking routes	Council	



“It’s hard to access the crematorium by public transport.”

“What about a cycle route beside the railway?”

“Mortlake station needs some love.”



Infrastructure vision – *provide the things we're missing*

- Include additional GPs, post office, police station in the STAG development.
- Provide a pedestrian/cycle bridge from the STAG development to the Chiswick side of the Thames and/or Mortlake Pier
- Improve maintenance and landscaping around social housing estates
- If a film studio remains on the STAG site, capitalise on this for the local area for example, use it to provide specialist training for those interested in the film or creative industries
- Create a masterplan with local input to guide inclusive development, in particular truly affordable housing



“Buy up land for public use.”

“Do we need another bridge?”

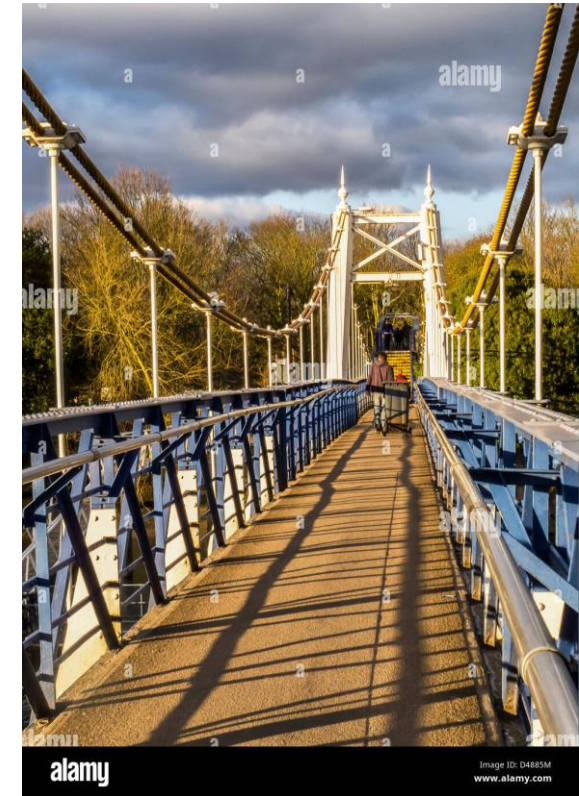
“Let’s animate both sides of the river...what about another bridge to Dukes’ Meadows and Chiswick?”

Have we missed anything?



Infrastructure – *Action Plan*

Theme	Action Item	Resident Partners	Notes/Resources
Infrastructure	Add post office, police station and additional GP services in STAG development	Council + Developers	Embed into Brewery redevelopment
Infrastructure	Mortlake pier/pedestrian bridge crossing, enhance Tow Path	PLA + Council	Improved infrastructure to enhance development and active transport in the area
Infrastructure	Improve maintenance and landscaping around social housing estates	RHP + Council + Bluescapes	Link with Community Bluescapes flood resilience project
Infrastructure	Consider Neighbourhood Master Plan for the Mortlake area - focus on how to increase affordable housing	Council	Enables 25% (rather than 15%) CIL to be used in the 'Local area', which could contribute to affordable housing





Enterprise vision – *prosperous, diversified business economy*

- Diversify local shops and services along Lower and Upper Richmond Road, supporting 20-minute neighbourhood.
- Support local businesses with a dedicated directory and better promotion of businesses, community blog or newsletter. (e.g. Enterprise Map, online directory updates, better use of Richmond Council website/visit Richmond).
- Provide networking events and collaboration for businesses and charities, plan ahead to ensure time-strapped business owners can attend, link with East Sheen/Barnes networks
- Encourage co-working and more business start-up support models like PATCH.
- Improve the affordability and accessibility of retail units, business rates etc., particularly for new start-ups and independents
- Work with traders to encourage apprenticeships, work experience, volunteering, etc. through directory of opportunities for those looking to start or change career
- Review under-utilised commercial or community space for pop-up businesses



“As a resident there’s nothing to direct me to the local high street.”

Have we missed anything?



Enterprise vision – *Action Plan*

Theme	Action Item	Resident Partners	Notes/Resources
Enterprise	Promote businesses via local directory, better links with council, East Sheen/Barnes Networks	Council + Nadia + Emma + Traders	Emma – BCA and Nadia – East Sheen, already have strong local networks, need to work with them
Enterprise	Encourage collaboration/networking amongst businesses and Support models (like PATCH)	Council + Traders	
Enterprise	Improve affordability of space/rates for start-up businesses	Council + Traders	
Enterprise	Provide directory of local work opportunities	Council	
Enterprise	Use of under-utilised commercial or community space for pop-up businesses e.g. restaurants on URR	Council + Traders	



“There could be improvements to the High Street for local people, with pop ups for SMEs and entrepreneurs – guys that want to get things happening.”

“Make the High Street a more welcoming destination.”

Young People's vision - *welcoming, inclusive area for young people*



- Desire for a caring, welcoming, and inclusive environment.
- Fund and expand youth clubs including the Power Station.
- Provide free access to sports courts for boxing, netball, basketball, football, space for running track, trampolining, and scooter ramps and better river access for canoeing, paddleboarding, safe swimming,
- Include community sports boxes with equipment in green spaces.
- Organise regular youth-led events like band nights, art shows, and film screenings.
- Launch a 'Theatre on the Green' for youth-led performances and outdoor cinema on local historic sites.
- Develop public art projects using salvaged materials (e.g. carved tree sculptures), support art and sculpture clubs for children and teens.
- Celebrate Mortlake's history through themed displays, sweet shops, and storytelling installations.



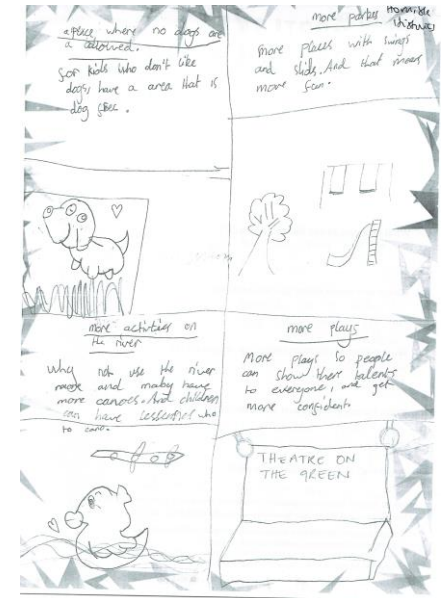
The PowerStation plan to run a youth Mash Up later in the year to check we've summarised young residents' priorities correctly

Have we missed anything?



Young People - Action Plan

Theme	Action Item	Resident Partners	Notes/Resources
Young People	Fund and expand youth clubs and activities, including the Power Station	Council + AFC	
Young People	Provide free access to a range of sports, and community boxes in parks with necessary equipment	Council (parks + finance)	Stag Field or Jubilee Gardens?
Young People	Organise monthly youth focused, free/affordable activities for young people	AFC	
Young People	Provide affordable youth led cinema and theatre groups on historic sites/OSO	OSO + Barnes /STAG Cinema + Council	Liaise with local providers for affordable youth nights
Young People	Develop public art installations/displays for young people/teens		



Sign up to help make this happen!



Vision Masterplan - *first phase projects?*

- Inclusive community hub – “beating heart” – facilitate masterplan and provide local information and activities
- Mortlake Green – invest in the green as “the focal point” of Mortlake, e.g. café
- Improve lighting, CCTV in hot spot areas and improve police visibility at the community hub
- Stag Brewery field, invest in inclusive community sports facilities
- Community murals on bridges/wall spaces
- Improve community access to the river for safe river activities (e.g. paddle boarding)
- Tow path improvements and weekly community ‘River Run’
- Community Bluescapes initiatives throughout Mortlake (incl. redesign for intergenerational uses of RHP ‘playground’ behind John Dee (include teens and SEND)
- Arteries - Mortlake High Street, Lower Richmond Road, Sheen Lane, Broadway and White Hart Lane – Environmental improvements (greening, seating, improve active uses for pedestrians and cyclists) and shop local initiatives
- Greening projects in community spaces – e.g. South Worple Ave, Langdon Place
- Invest in improving connectivity and community uses (e.g. public toilets, signage, seating) around Mortlake Station
- Improve cycling provision along N&S Worple Way
- Invest in PowerStation, children’s centre and youth projects/facilities

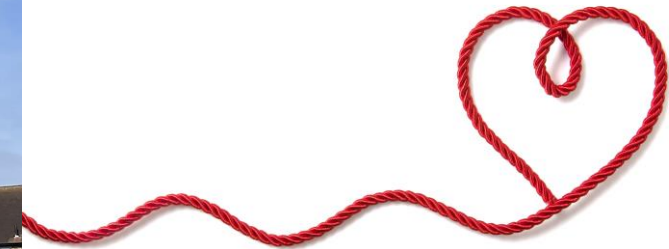


Are these your priorities?

Vision Masterplan – *Inclusive Community Hub: “beating heart”*



**THE
MORTLAKE
MASH-UP**
BREWING UP NEW IDEAS



Vision Masterplan - *Mortlake Green: the “focal point”*



**THE
MORTLAKE
MASH-UP**
BREWING UP NEW IDEAS



Vision Masterplan – *develop community sports facilities*



**THE
MORTLAKE
MASH-UP**
BREWING UP NEW IDEAS



Vision Masterplan – *Riverside improvements*



**THE
MORTLAKE
MASH-UP**
BREWING UP NEW IDEAS



Vision Masterplan – *Mortlake High Street* – greening



**THE
MORTLAKE
MASH-UP**
BREWING UP NEW IDEAS



Vision Masterplan – *Murals in community spaces*



**THE
MORTLAKE
MASH-UP**
BREWING UP NEW IDEAS



Vision Masterplan – Mortlake Station – accessible toilets!



THE
**MORTLAKE
MASH-UP**
BREWING UP NEW IDEAS

*Signage, crossing
improvements !!*



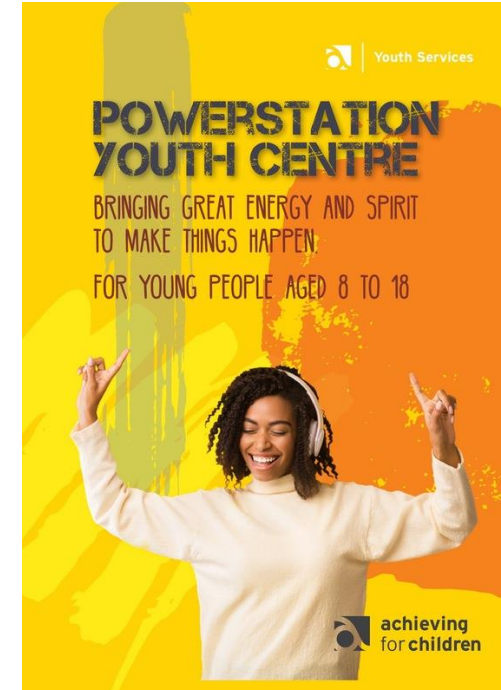
Vision Masterplan – *Enhance Jubilee Gardens*



**THE
MORTLAKE
MASH-UP**
BREWING UP NEW IDEAS



Vision Masterplan – *PowerStation and youth projects*



THE
**MORTLAKE
MASH-UP**
BREWING UP NEW IDEAS



Vision Masterplan – *Support local businesses & jobs*



THE
**MORTLAKE
MASH-UP**
BREWING UP NEW IDEAS



“Shop local for goods and services”



Next Steps – ***SIGN UP*** - help make your priority a reality!

Sign up to help make your priority a reality!

- Sign up for the idea you like the most
- Find other people with the same interest
- Form a Working Group under each Theme Heading



Follow up Meeting

9 July for potential volunteers, 6:30-8:15pm in Mortlake Hall, facilitated by the Mash Up team

Process

- Prioritise greatest needs first
- Identify projects with greatest impact and support
- Discuss with Council/Councillors/local residents and interest groups ..
- Identify resources: Council, volunteers, funding grants

Co-ordination and Communication

- MCA to seek funding for a part-time Mash Up co-ordinator to support project teams, and share best practice
- Create an on-line resource which all working groups can draw on ..



“If more people mention it, then it will happen!”



THANK YOU!

Any Questions or Feedback?